

# Opening up the world

for children and young  
people with vision impairment

GUIDE  
DOGS



Children and Young People's Services



## **We help children and young people with vision impairment reach their potential**

The Guide Dogs charity supports children and young people with vision impairment and their families. Guide Dogs' children and young people's services include the full range of services previously provided by our sister organisation, Blind Children UK. We have now fully combined the two charities under the Guide Dogs name.







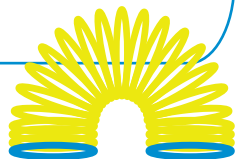
## Family Support

Our Family Support Team gives emotional and practical support, advice and information. We can explain terminology, give support at early diagnosis, give independent advice on benefits, or help you make contact with other agencies and groups.

We provide subsidised opportunities for your family to attend activities, with trips to the theatre, zoo and more. They are a great way to meet others in similar situations and for your child to make new friends.



**"If it weren't for the help Guide Dogs gave us, I think I'd be in my room on my own, rather than going out and doing all the things I like to do." Theo.**





## Education Support

Finding out how your child's educational needs should be met and helping them through each stage in their education can be daunting. Our Education Support team is here to provide free advice around your child's statutory rights, explain terminology and support you with processes and forms. We're also experienced at liaising with professionals on your behalf.



**"When I was trying to figure out Harry's education on my own, there was so much I didn't know. Having Guide Dogs behind me with all their expertise was a godsend.**

**Harry was crying every day about going to school. Now he'll come home and tell me how proud he is of something he's done."**

Beverley, mum to Harry.





## CustomEyes

Our CustomEyes<sup>®</sup> service prints large print books for children with vision impairment. We supply the latest fiction and factual bestsellers, as well as educational textbooks, tailor-made to make the joy of reading accessible to as many young people as possible. We currently have more than 4,000 large print book titles and we're updating our selection all the time.

We produce each book in the font size, paper colour and format to suit your child's specific eye condition. Once registered with CustomEyes<sup>®</sup> you can order titles at the normal publisher's retail price.





## Guide Dogs

A guide dog can offer significant benefits to young people who are blind or partially sighted in terms of increased confidence, self-esteem, independence and mobility.

The application process begins with an informal visit from a trained member of Guide Dogs staff. The applicant and their family then find out more about the process towards guide dog ownership. Teachers and other professionals are involved throughout.



## Movement Matters

Children with vision impairment often need to be taught the basic skills and concepts that develop naturally in their sighted friends.

Our Movement Matters service helps your child develop vital movement, orientation and independence skills.

These life-changing skills are taught by our qualified Habilitation Specialists, who work shoulder to shoulder with other organisations including local authorities.

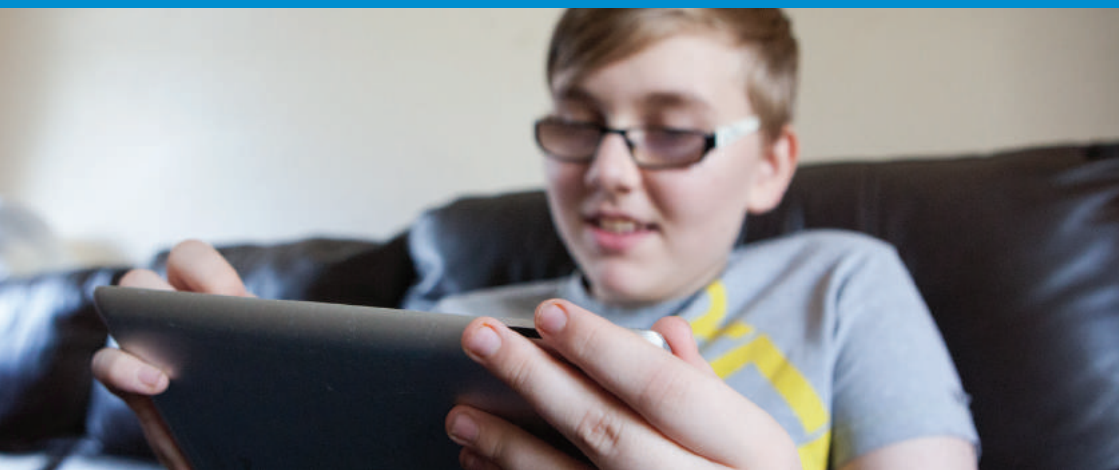
Our free parent's workshops equip you to support your child to learn and grow.



**Meeting other parents and learning the skills taught on the Movement Matters workshop made us realise how much we had to learn and teach Megan.**

Ellen, mum to Megan





## Access Technology

The correct assistive or adaptive technology can act as a lifeline to your child – but how do you ensure your child receives the right devices and software to meet his or her needs?

Our Access Technology Team provides advice over the phone and we work with other organisations to ensure you receive unbiased, relevant information.

We also have a grants programme to help your child access the latest technology and sensory equipment. Please get in touch to find out how we can help.

Contact us on:

**T: 0800 781 1444**

**E: [cypservices@guidedogs.org.uk](mailto:cypservices@guidedogs.org.uk)**

**W: [www.guidedogs.org.uk](http://www.guidedogs.org.uk)**

**Services for children and young people  
with vision impairment**

Registered Charity England & Wales 209617 Scotland SCO38979. 9086 11/16





# Specialist Family Support Team

“we listen, care and advise”

GUIDE  
DOGS



Children and Young People's Services

**We work with parents and carers of children and young people between the ages of 0-25 who have a vision impairment.**



**I feel like a weight has been lifted.**

Aggie and Robert  
(parents to Max)

We can offer support – both emotional and practical – right through the diagnosis process and beyond.

We can support and advise families in a number of ways such as helping them complete DLA/PIP applications, providing information on local and national activities, or simply offering a much-needed listening ear.



## Please get in touch if you feel you are in one of these situations.

- Your child has been diagnosed with a vision impairment within the last 12 months.
- Your child has yet to receive a diagnosis for a vision impairment.
- Your child's vision has recently changed.
- You attend frequent hospital visits/eye tests.
- You have recently moved to a new area.
- Your child does not receive, or you are looking to apply for, benefits and grants.
- You are looking for activities and early development advice for your child.

## Specialist Family Support Service

If you are a family or a professional working with a family that would like to access our service please contact the Specialist Family Support Team.

### Our support covers:

- Support to understand the diagnosis (non-clinical advice).
- Advice about social services provision.
- Parental emotional support.
- Benefit and support schemes.
- Existing services and groups.
- Advice and information on aspects of vision impairment.







## Aggie, Robert and Max

Max and his family first accessed the Guide Dogs Family Support Service just days after Max was diagnosed with nystagmus. We worked closely with the family offering practical and emotional support. Max and his family are making positive progress on their journey knowing that our support is always available to them when needed.

**There is a lot of unknown for Max and his future but I know the Children and Young People's Service will be there for us every day we need them.**

Aggie and Robert  
(parents to Max)

## Specialist Family Support

Contact us on:

**T: 0800 781 1444**

**E: [cypservices@guidedogs.org.uk](mailto:cypservices@guidedogs.org.uk)**

**W: [www.guidedogs.org.uk](http://www.guidedogs.org.uk)**

**Services for children and young  
people with vision impairment**

